



PT. Sansan Saudaratex Jaya
Textile & Garment Industry

Vision & Mission



VISION

“Diakui sebagai sebuah perusahaan kelas dunia dan dipercaya melalui komitmennya yang tinggi kepada kepuasan pelanggan.”

“To be recognized as a world-class corporation and trusted for its commitment to customer satisfaction”

MISSION

“Kami adalah sebuah perusahaan yang menyediakan produk apparel yang bernilai tinggi untuk masyarakat global agar dapat meningkatkan standar hidup. Kami melakukannya dengan berusaha keras agar dapat memastikan bahwa kepuasan stakeholder kami senantiasa terpenuhi”

“We are a corporation providing high value apparel product for the global society to improve living standards. We do this through hard work and strive to ensure that our stakeholders’ satisfactions are fulfilled.”

Company Background



Company Name : PT. Sansan Saudaratex Jaya

❖ Established in 1987 as garment manufacturer and exporter

❖ <u>Name of Shareholder</u>	<u>Country of Origin</u>
Mr. Gunaras Danubrata	Indonesia
Mr. Johan Danubrata	Indonesia
Mr. Yohanes Danubrata	Indonesia

CEO : Mr. Gunaras Danubrata

President : Mr. Budi Danubrata

Marketing Director (New York) : Mr. Ashok Melwani

Company Background



- ▶ Total Factory Size : 77,229 m² from 7 facilities:
 - SS1 of 43,237 m²
 - SS2 of 3,592 m²
 - SS3 of 5,592 m²
 - SS5 of 4,907 m²
 - SS6 of 3,150 m²
 - SS9 of 4,109 m²
 - SS12 of 10,642 m²

- ▶ Average Annual capacity : 28 Million Pcs



Cimahi (4 factories)

Semarang

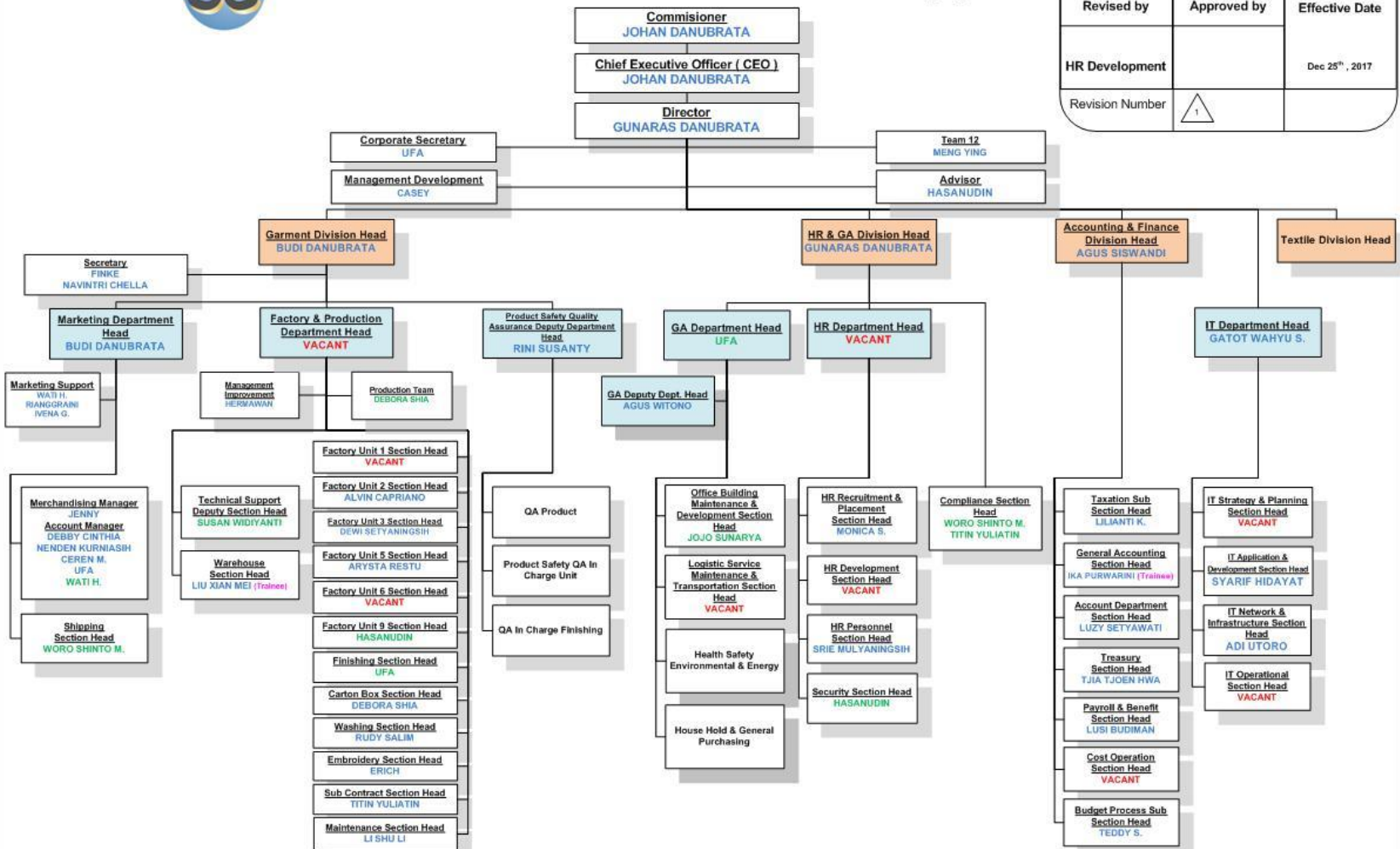
Salatiga



Organisation Chart



ORGANIZATION CHART OF pt.sansan saudaratex jaya



Organization Chart of pt.sansan

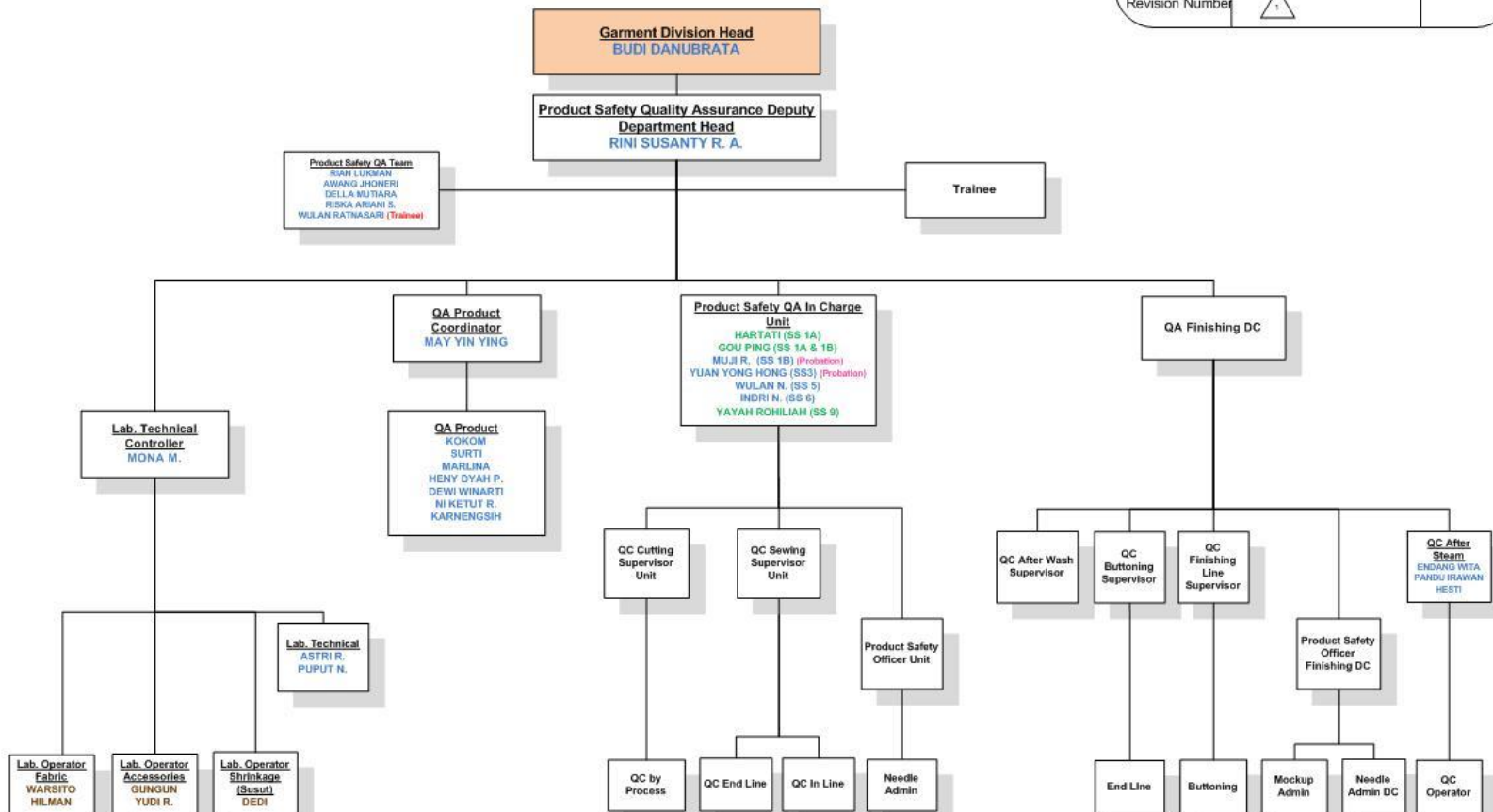
Revised by	Approved by	Effective Date
HR Development		Dec 25 th , 2017
Revision Number	1	

Organisation Chart QA



ORGANIZATION CHART FOR PRODUCT SAFETY QUALITY ASSURANCE DEPARTMENT

Organization Chart of QA		
Revised by	Approved by	
HR Development		QA Dept. Head
Effective Date	Des 25 th , 2017	
Revision Number	1	



Factory Matrix



PT. Sansan Saudaratex Jaya unit 1 (SS1)

Location: Cimahi – Bandung (West Java-Indonesia)

Production Capacity : 624K/month

Number of Lines / Workers : 20 Lines / 784 workers

Product : Woven , Knit (pant, shirt, blouse, jumper)



Factory Matrix



PT. Sansan Saudaratex Jaya unit 2 (SS2)
Dedicated for Japan Customer

Location : Cimahi - Bandung (West Java-Indonesia)

Production Capacity : 200K/month

Number of Lines / Workers : 6 lines / 220 workers

Product : Blazer, Dress, Skirt



Factory Matrix



PT. Sansan Saudaratex Jaya unit 3 (SS3)

Location : Semarang (Central Java Indonesia)

Production Capacity : 400K/month

Number of Lines / Workers : 13 lines / 715 workers

Product : Woven (Body suit, Shirt)



Factory Matrix



PT. Sansan Saudaratex Jaya unit 5 (SS5)

Location : Cimahi - Bandung (West Java-Indonesia)

Production Capacity : 570K/month

Number of Lines / Workers : 25 lines / 994 workers

Product : Woven, Knit (pant, Skirt, Overall, Jacket, jumper, Dress)



Factory Matrix



PT. Sansan Saudaratex Jaya unit 6 (SS6)

Location : Cimahi - Bandung (West Java-Indonesia)

Production Capacity : 300K/month

Number of Lines / Workers : 11 lines / 440 workers

Product : Woven (pant, Skirt, Overall, jumper)



Factory Matrix



PT. Sansan Saudaratex Jaya unit 9 (SS9)

Location : Tasikmalaya (West Java – Indonesia)

Production Capacity : 250K/month

Number of Lines / Workers : 12 lines / 480 workers

Product : Denim (Top & Bottom)



Factory Matrix



PT. Sansan Saudaratex Jaya unit SS12

Location : Salatiga (Center Java-Indonesia)

Production Capacity : 60K/month

Number of Lines / Workers : 10 lines / 160 workers

Product : woven shirt, knit tops



Major Customers



H&M



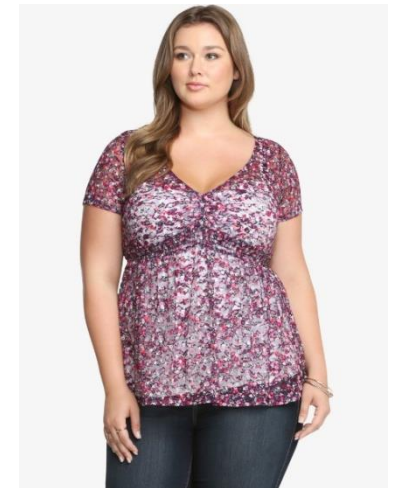
Major Customers

carter's® | **OSHKOSH**
B'gosh



Major Customers

TORRID



Major Customers



maurices



Major Customers



ONE
JEANSWEAR GROUP



Japan Customer



実感できる毎日
CLOSSHI

着心地、使い心地、触り心地。
CLOSSHIは素材や作りにこだわりました。



Strength



- ❖ In house facilities for supporting process:
 - Internal Lab Testing (Certified by H&M)
 - R&D for Fashion Design, Artwork
 - Embroidery facility
 - Garment Laundry facility
 - Dyeing in-house facility
- ❖ Accredited BPFE (Business Partner Fit Engineering) for Target on April 2015
- ❖ Accredited Technical for H&M from 2016
- ❖ EIM (environmental Index Measurement) software for sustainability awareness
- ❖ Multiple category production capabilities
- ❖ Accountable vendor whereas we receive H&M **Gold Supplier award** for 2015, 2016, and 2017
- ❖ Flexibility for small order, competitive price.

Awards



**H&M :
GOLDEN SUPPLIER
FOR 2015 – 2017**



CARTER'S AND OBG :
**1.BEST OF THE BEST SUPPLIER
FOR 2010 – 2011**
**2.OUTSTANDING PERFORMANCE
2011**
**3. EXCEPTIONAL PERFORMANCE
2011**
4. SUPERIOR QUALITY 2013



Marker Pattern



Output Marker : Gerber, Lectra, Gemini

Output Pattern : Lectra, Optitax

Warehouse



Number of inspection Machines :
10 Units Woven Machine
4 Units Knitting Machine

Cutting (Auto Cutter)



Finishing



Packing



Washing Facility (1)



HANDSAND



PP SPRAY



WASH MACHINE (FOR SAMPLE)



SLENGER



CRINKLE (3D WHISKER)



WASH MACHINE (FOR BULK)



DRYER





Washing Facility (2)

▶ Machines List:

- Wash Machine for sample (5 machines)
- Wash Machine for bulk (8 machines)
- Slenger / Press (6 machines) →
- Dryer (16 machines)
- Crinkle (20 set)
- Curing (1 machines)

▶ Capacity

- Denim ± 200K pcs/month
- Garment wash ± 2 million pcs/month
- Enzyme wash ± 300K pcs/month

Embroidery (1)



EMBROIDERY MACHINE (25 machines)



POCKET MACHINE (19 machines)



BASS MACHINE (36 machines)



LASER CUT MACHINE (3 machines)



Embroidery (2)



► Capability

- embroidery below 3000 stitches.
- make application/accessories, such as flower.
- cut binding

► Capacity

Depend on design, normally 350,000 pcs/month



Embroidery (3)



Printing (1)



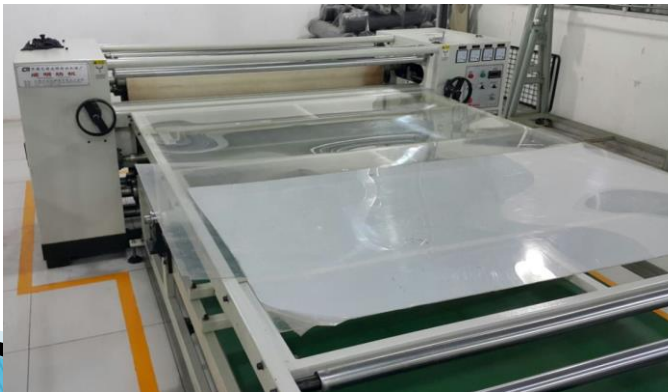
DTG PRINTING MACHINES



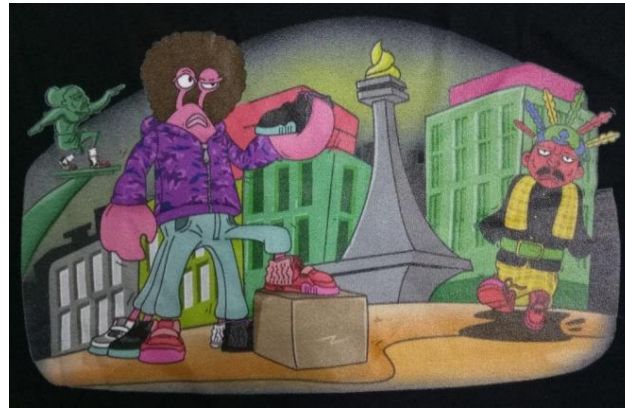
CURING MACHINES



SUBLIME PRINTING MACHINES



Printing (2)



Internal Lab Facility Machinery & Tools



WASHING MACHINE



GRAMASI



LIGHT BOX



SAF-Guard



DRYING MACHINE



SHARP EDGE
TESTER



SHARP POINT
TESTER



CROCKMETER



Button Impact
Tester





Testing & Analysis

1. Color Fastness to Household Laundering
2. Dimensional Stability to Household Laundering
3. Twisting
4. Appearance After Wash
5. Color Fastness to Dry/Wet Rubbing
6. Nickel Test
7. Physical Test (Pull Test, Button Impact Test, Sharp Edge and Sharp Point Test)
8. Fabric Test (Color Fastness, Color Change, Gramasi , Shrinkage, Bowing/Skewing)
9. Color fastness to water, perspiration, saliva, phenolic yellowing
10. Shrinkage

RESEARCH AND DEVELOPMENT

To stay updated with today's fast fashion trends and to service the requirements of our customers, we have an experienced Design/R & D team comprising of in-house and free lance designers who are scouting for new ideas, fabrics, accessories etc. We understand that as much as the look of the product is important, it also needs to be production feasible and price sensitive.

Our in-house washing facility continuously works on new washing techniques and also dry finishes.

We have a separate unit which handles sampling of new developments with a capacity of 300 pieces per day.



Textile



DESIZING



MERCERIZE



FINISHING



SUEDING



Textile



PAD DRY



PAD STEAM



SETTING



INSPECT



Textile



► Capability

- Dyeing
- Finishing

For woven only (Cotton, Polyester, TC, TR)

► Capacity

1 – 1.5 millions per month



Charity Days



FLOOD DONATIONS



BUDHA TZU CHI



Thank you