



PT.SANSAN SAUDARATEX JAYA

COMPANY PROFILE

©copyright 2024

ADDRESS

Jalan Cibaligo No. 33
Cimahi - Bandung
Indonesia 40535

CONTACT

Tel. 62-22-6033788
Email info@ptsansan.co.id
Web www.ptsansan.co.id



About Us



Established in 1987, PT. Sansan Saudaratex Jaya has evolved to become a one-stop solution for some of the world's most recognized brands. With an annual turnover of \$80 million across Garment & Textile manufacturing, PT. Sansan Saudaratex Jaya is Indonesia's leading manufacturer and apparels exporter.

Name of Shareholder

- | | |
|-------------------------|-----------|
| • Mr. Gunaras Danubrata | Indonesia |
| • Mr. Johan Danubrata | Indonesia |
| • Mr. Yohanes Danubrata | Indonesia |

- | | |
|-----------------------|------------------------|
| • CEO | : Mr.Gunaras Danubrata |
| • President | : Mr. Budi Danubrata |
| • Commercial Director | : Mr. Billy Danubrata |
| • Marketing Director | : Mr. Ashok Melwani |

Our Vision

To become a globally reputable apparel manufacturing company through distinctive recognition for our products, performance, processes, and most important, our people.

Our mission

To deliver the best quality of products and achieve profitable growth through innovation, quality, consistency and commitment.

Our Value



Commitment

Creating a strong business ethic and building a better world are not conflicting goals - in fact, both are essentials and intertwined on our long term success.



On Time

We highly value our clients' partnership, time, and performance. With that in mind, we make it our top priority to deliver goods on-time to improve our clients' satisfaction



Quality

We take quality control very seriously so that the products manufactured meet every requirements of each brand's DNA. Therefore, we are thoroughly committed to fulfill our customers' satisfaction and deliver only exceptionally good quality products.



Our people

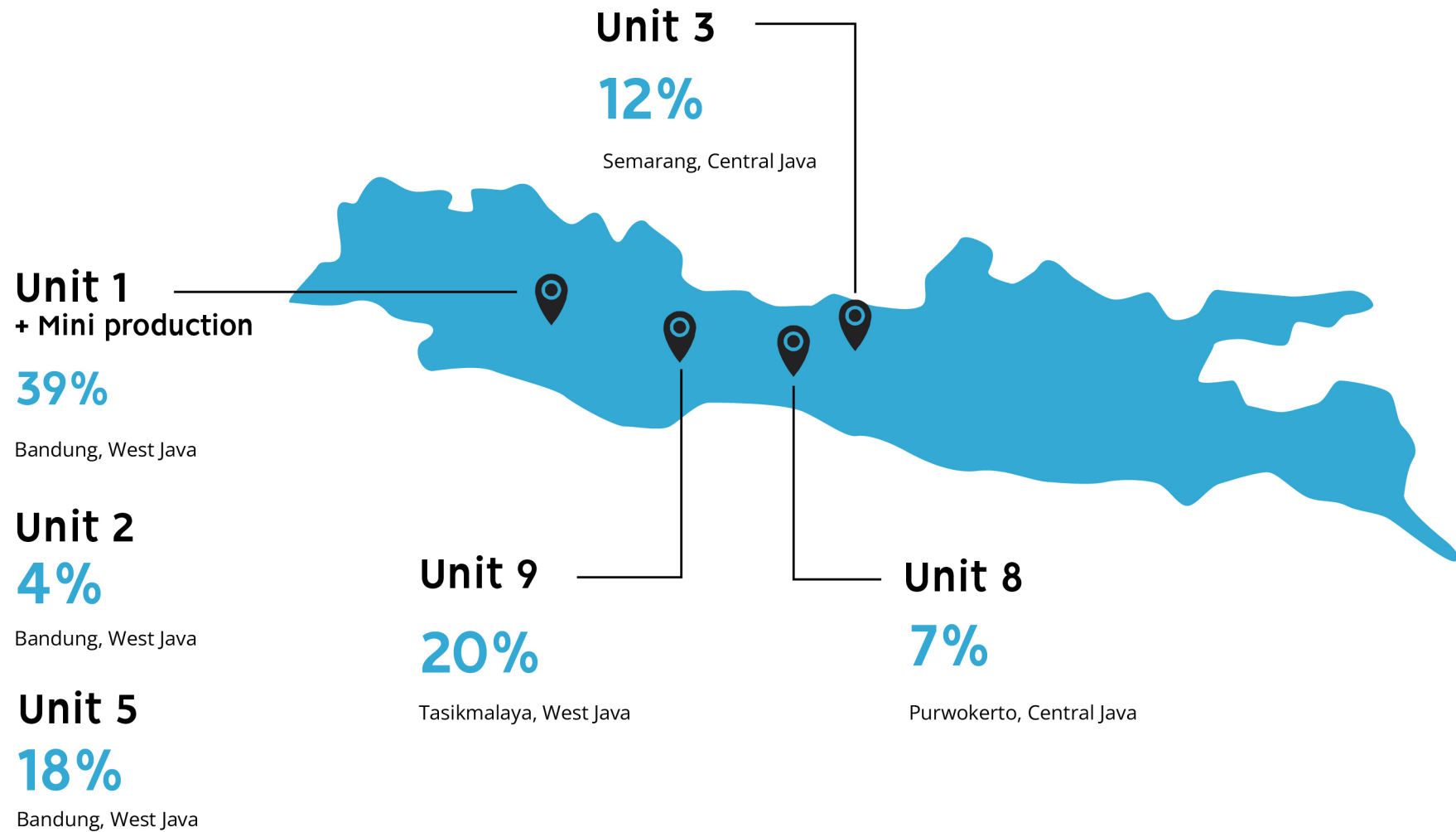
Our people are our most important asset, and we strive to be a people-first company, supporting our teams across corporate offices and factory units to reach their full potential.





OUR CAPACITY

Production Share





OUR CAPACITY

Production Units

Unit 1 + Mini production

Location: Bandung, West Java

Product Category: Woven Tops and Bottoms ; Knitwear for Tops and Bottoms for Mens, Ladies, Kids, and Baby.

Total Sewing Lines: 24

Capacity: 8.200.000 minutes / month

Certification



Brand

AÉROPOSTALE

POLO RALPH LAUREN

H&M

carhartt

alfred dunner



Product



OUR CAPACITY

Production Units

Unit 2

Location: Bandung, West Java

Product Category: Suits, jacket, blouse, dress, and pants for ladies.

Total Holding Lines: 8 lines (15 people each line).

Employees: 287 people

Capacity: 16.000 pieces / month

Brand

TOKYO SOIR

EMMA JAMES

SORITEAL®
WHITE LABEL

LADIES FORMAL
G GARO

 TOKYO IGIN
ONLINE STORE

Mary coco

Product



OUR CAPACITY

Production Units

Unit 3

Location: Semarang,
Central Java

Product Category:
Woven Casual Tops ;
Suit & Tailoring Tops for
Mens and Ladies

Total Sewing Lines:
7

Capacity: 4.700.000
minutes / month

Certification



Brand

AÉROPOSTALE maurices



LUCKY ♣ BRAND



Product



OUR CAPACITY

Production Units

Unit 5

Location: Bandung,
West Java

Product Category:
Woven Bottoms ; Denim
Bottoms for Mens &
Ladies

Total Sewing Lines:
12

Capacity: 7.400.000
minutes / month

Certification



Brand





Product



OUR CAPACITY

Production Units

Unit 8

Location: Purwokerto,
Central Java

Product Category:
Woven Bottoms & Tops
; Denim Bottoms for
Mens and Ladies

Total Sewing Lines:
6

Capacity: 2.400.000
minutes / month

Brand

Wrangler®

WOOD®





Product



OUR CAPACITY

Production Units

Unit 9

Location: Tasikmalaya,
West Java

Product Category: Tops
and Bottoms for Mens,
Ladies, Kids, Baby;
Woven, and Denim

Total Sewing Lines:
12

Capacity: 5.500.000
minutes / month

Certification



BetterWork

SOCIAL & LABOR
CONVERGENCE

WALT DISNEY
CERTIFICATE
FAMA



CTPAT
YOUR SUPPLY CHAIN'S STRONGEST LINK.

Sedex

Brand

carter's

OSH KOSH
B'gosh

H&M

Product



OUR CAPACITY

Washing Capability



01. DRYER MACHINE



02. HYDRO EXTRACTOR



03. WASHING AND DYEING



MACHINE

Belly washing machine:	8 units
Hydro extractor machine:	5 units
Dryer machine:	16 units



ENZYME, STONE WASH, SANDWASH

Using enzyme or pumice stone to get abrasion effect on denim.



REACTIVE, GARMENT DYE

Coloring on garment using reactive or pigment dyed stuff.



TIE DYE

Apply specific tie technique to get an unique color / pattern on garment.



TIE BLEACH

Apply specific tie technique to get an unique bleach effect on denim garment.



SOLAR, MINERAL WASH

Use special chemical to create a vintage looks on non- denim garment



WASHING CAPACITY

Denim washing capacity:
Garment wash / enzyme wash:

500.000 pcs
500.000 pcs



MANPOWER

Manpower: 275 worker





FRONT LOADING WASHING MACHINE



Stone and Sand Wash



Enzyme



Enzyme



Tie Bleach



Tie Dye



Tie Dye



OUR CAPACITY

Embroidery **Capability**



EMBROIDERY CAPABILITY

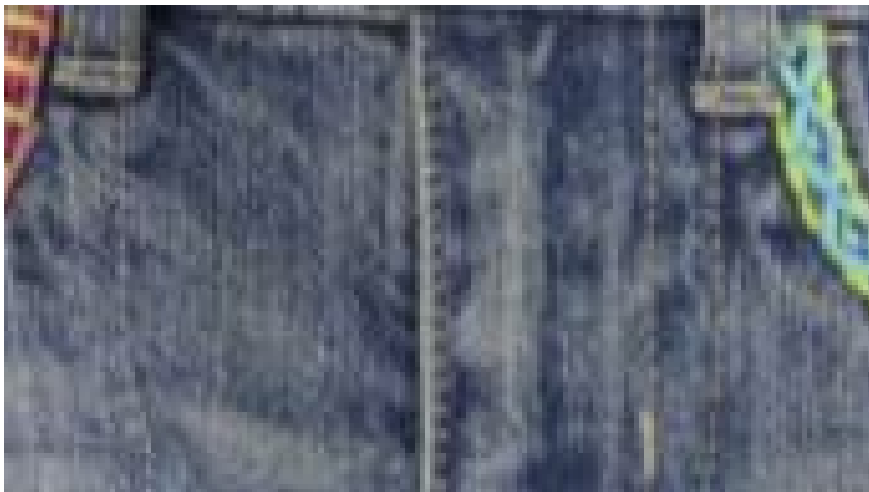
Embroidery below 3000 stiches
Make application or accessories, such as flower, and cut binding

CAPACITY

Depend on design, normally 350.000 pcs/ month

EMBROIDERY MACHINE (25 machines)**POCKET MACHINE (19 machines)****BASS MACHINE (36 machines)****LASER CUT MACHINE (3 machines)**





OUR CAPACITY

Printing Capability

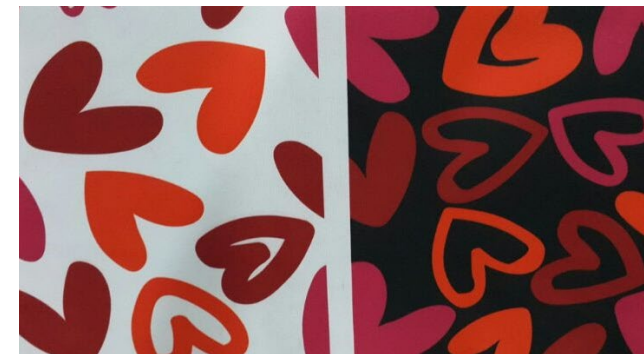
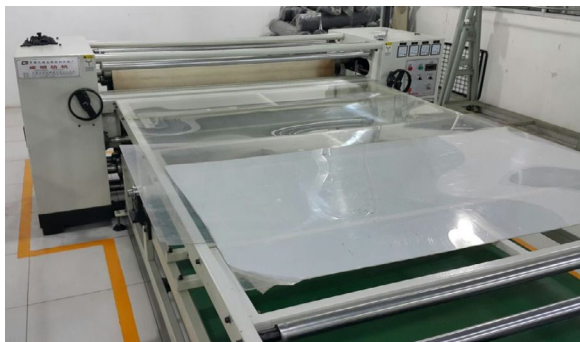
DTG PRINTING MACHINES



CURING MACHINES



SUBLIME PRINTING MACHINES





PT.SANSAN SAUDARATEX JAYA

ADDRESS

Jalan Cibaligo No. 33
Cimahi - Bandung
Indonesia 40535

CONTACT

Tel. 62-22-6033788
Email info@ptsansan.co.id
Web www.ptsansan.co.id